

Selection Control Structures

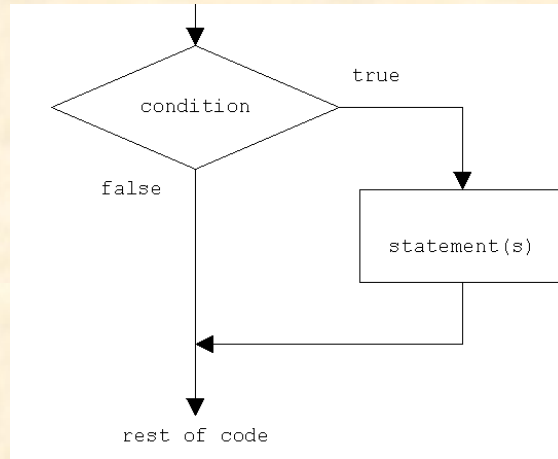
These are used in problems with instructions to be carried out if a certain condition is met. Examples of selection structures are:

1. if statement.

Format:

```
if (condition)
```

```
{ statements(s) }
```



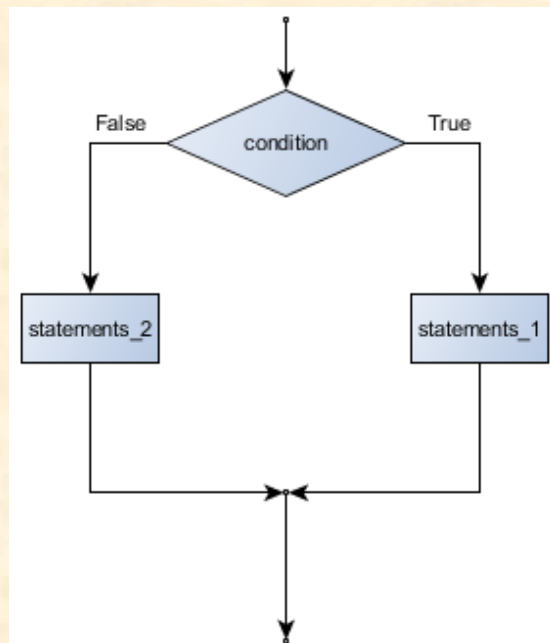
2. if else statement. Format:

```
if (condition)
```

```
{ statements(s) }
```

```
else
```

```
{ statement(s) }
```



Relational Operators:

== is equal to

!= is not equal to

> is greater than

< is less than

>= is greater than or equal to

<= is less than or equal to

Logical Operators:

&& AND

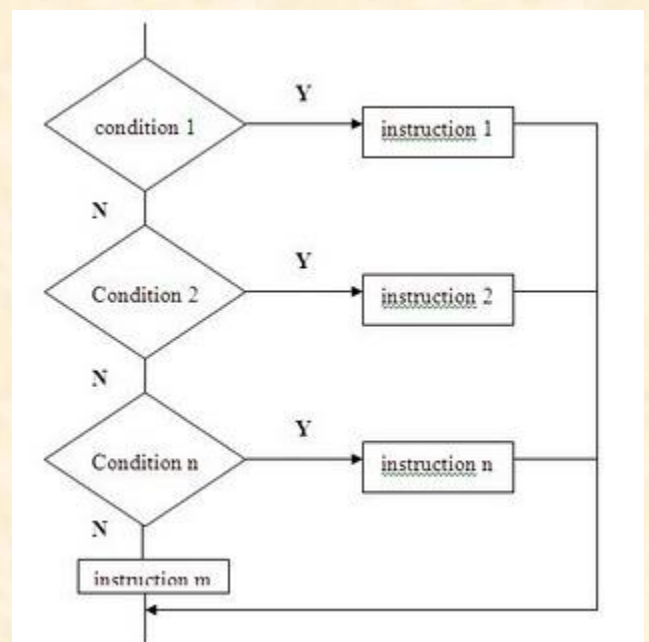
|| OR

! NOT

3. switch statement.

Format:

```
switch (expression)
{
    case value1: /* executes unit of code 1 */
        { Code 1 Statement(s)
        break;
        }
    case value2: /* executes unit of code 2 */
        { Code 2 Statement(s)
```



```
    break;
}
...
default: /* executes default action */
{Default Code Statements
    break;
}
}
```